

6578000N

- Alkali-feldspar leucogranite and pegmatite
- K-feldspar–phyric granodiorite
- Feldspathic meta-arenite
- Interbedded semipelitic and pelitic gneiss
- Calcsilicate gneiss and marble
- Interbedded psammitic and calcsilicate gneiss
- Psammitic gneiss
- Tonalitic to granitic orthogneiss
- Monzogranite, strongly foliated to gneissic

**Snyder Lake till geochemistry
(aqua regia partial digestion)
Sc (ppm) in <63 μm fraction**

- | | |
|------------|------------|
| ● 1–1.1 | ● 1.91–2.5 |
| ● 1.11–1.3 | ● 2.51–3 |
| ● 1.31–1.5 | ● 3.1–4.1 |
| ● 1.51–1.7 | |
| ● 1.71–1.9 | |

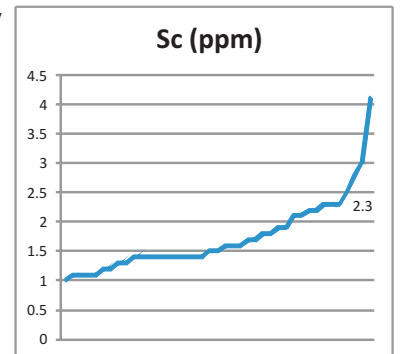


Figure 38: Snyder Lake till geochemistry: partial digestion of <63 μm fraction, Sc.